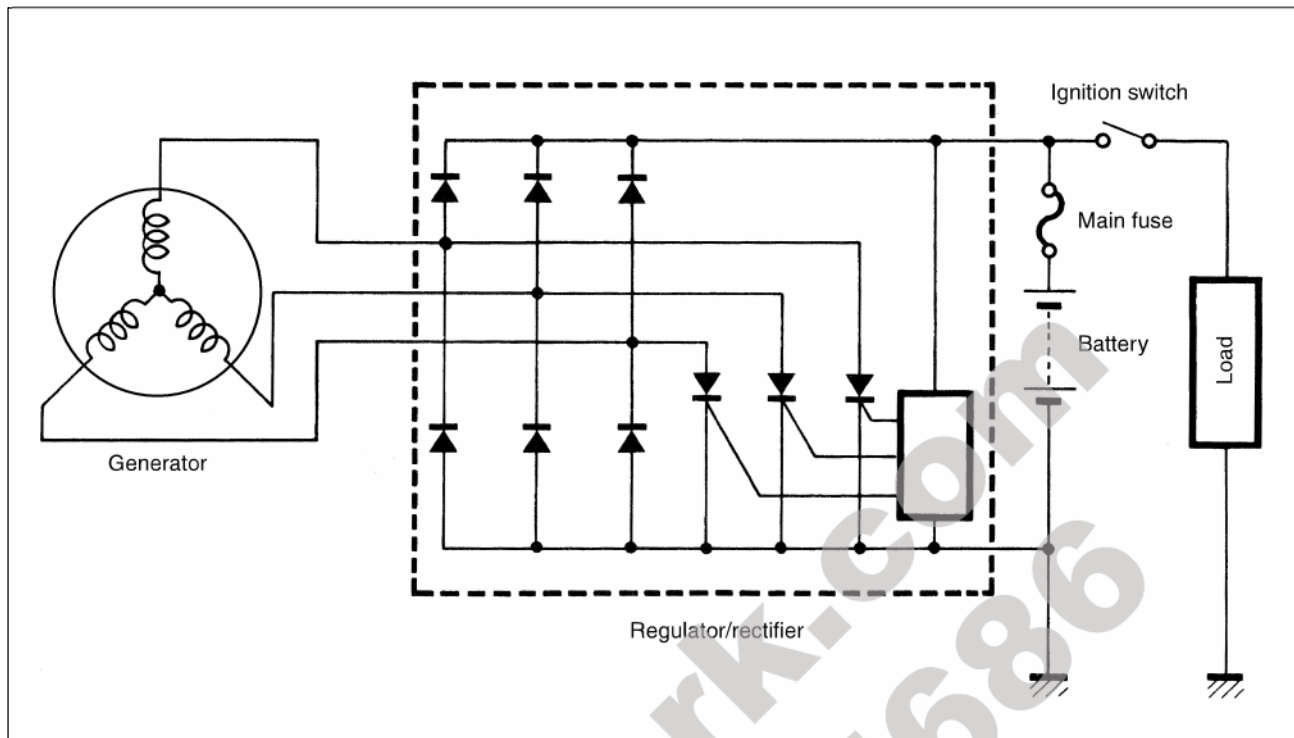
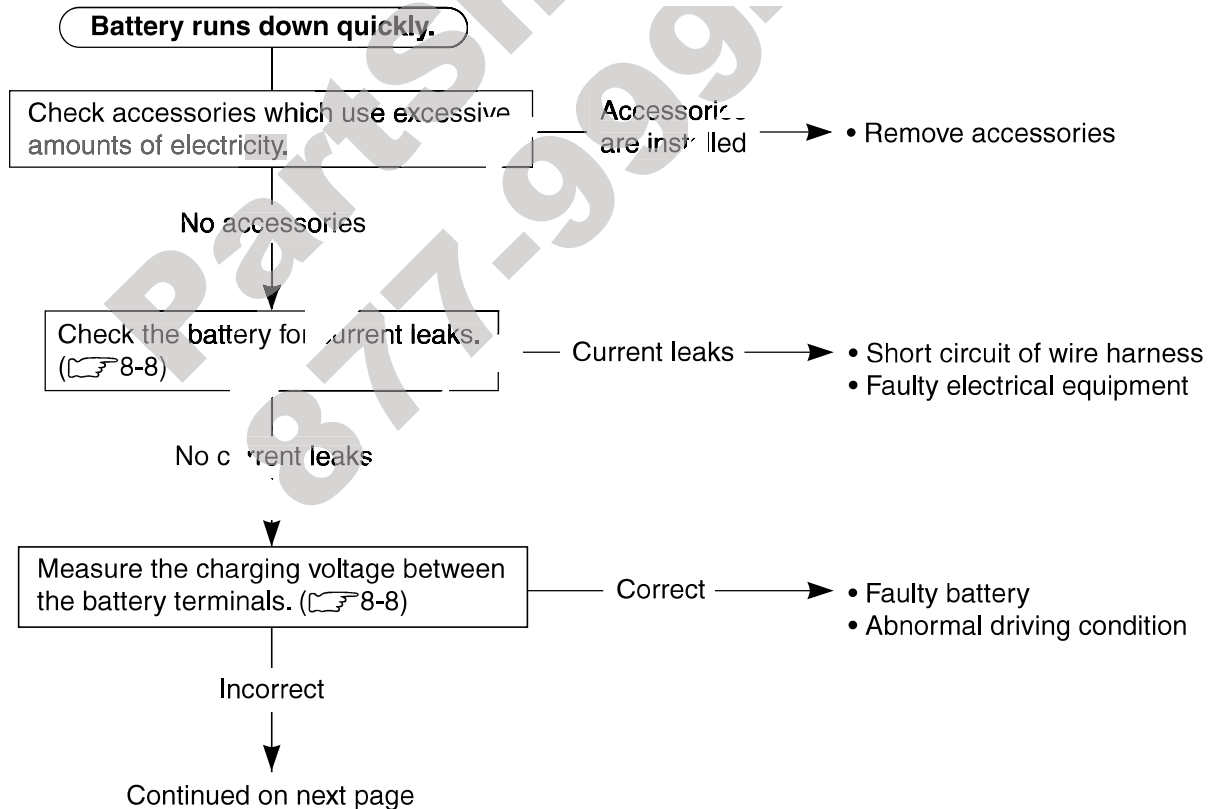
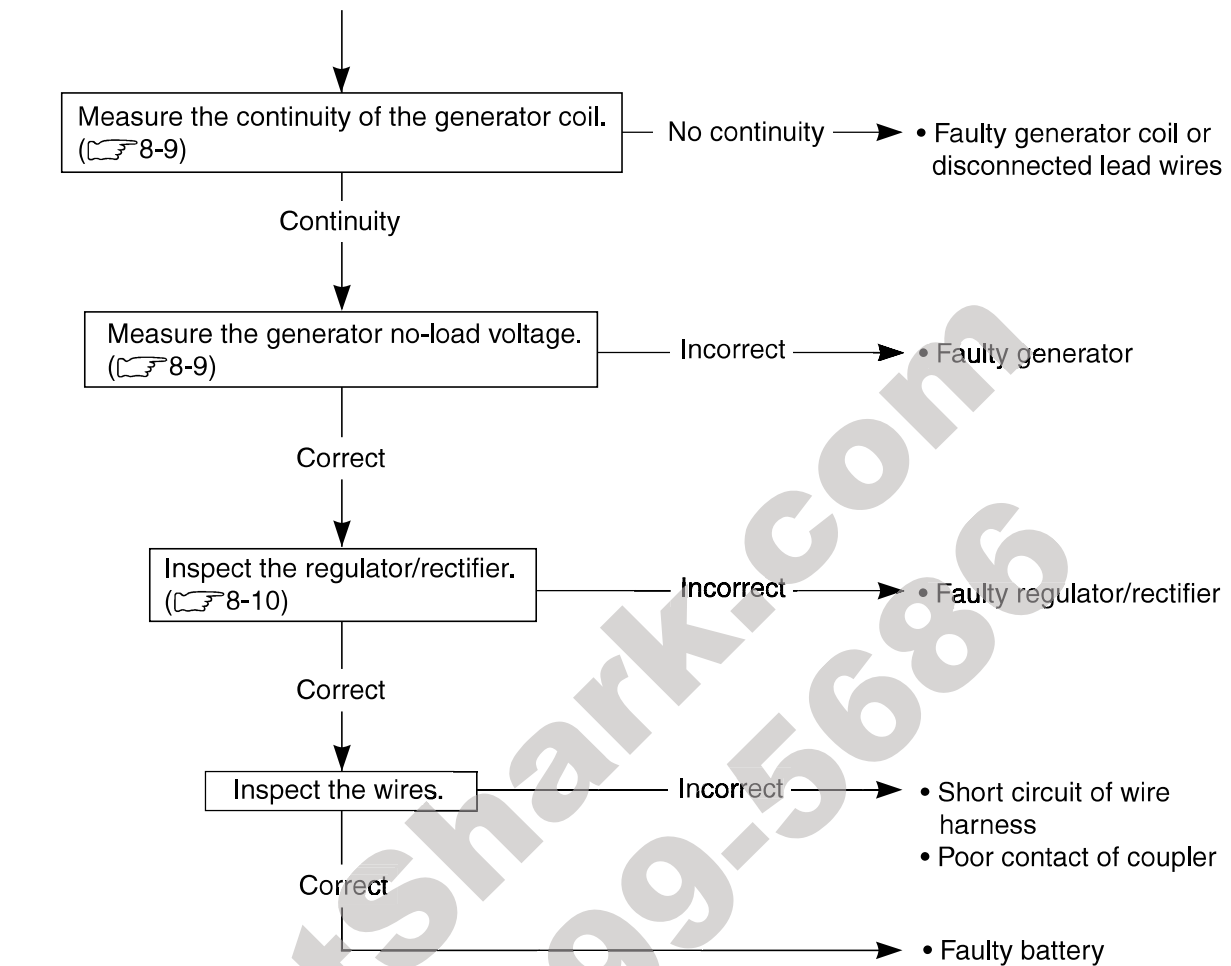


CHARGING SYSTEM



TROUBLESHOOTING




Others

Battery overcharges	<ul style="list-style-type: none"> • Faulty regulator/rectifier • Faulty battery • Poor contact of generator lead wire coupler
---------------------	---

INSPECTION

BATTERY CURRENT LEAKAGE

- Remove the seat. (☞ 7-4)
- Turn the ignition switch to the “OFF” position.
- Disconnect the \ominus battery lead wire.

Measure the current between \ominus battery terminal and the \ominus battery lead wire using the multi circuit tester. If the reading exceeds the specified value, leakage is evident.

TOOL 09900-25008: Multi circuit tester set

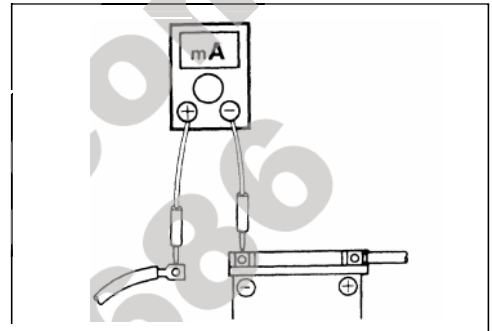
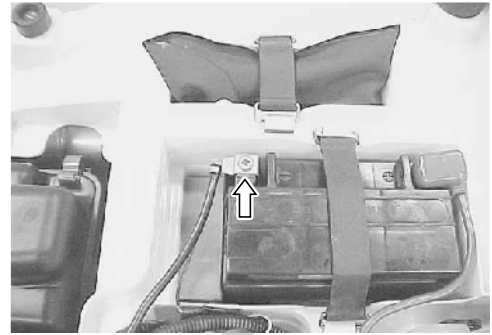
TESTER Tester knob indication: Current (—, 20 mA)

DATA Battery current (leak): Under 2.5 mA

CAUTION

- * Because the current leak might be large, turn the tester to the high range first to avoid tester damage.
- * Do not turn the ignition switch to the “ON” position when measuring current.

When checking to find the excessive current leakage the couplers and connectors, one by one, check



REGULATED VOLTAGE

- Remove the seat. (☞ 7-4)
- Start the engine, turn the ignition switch to the “ON” position, and turn the dimmer switch to HI and run the engine at 5 000 r/min.

Measure the DC voltage between the positive battery terminal and the positive battery lead wire using the multi circuit tester. If the reading is less than the specified value, inspect the battery and the lead wire. (☞ 8-9 and 8-10)

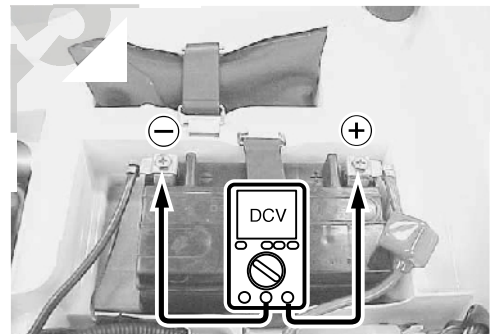
NOTE:

When making the measurement, be sure the battery is in fully-charged condition.

TOOL 09900-25008: Multi circuit tester set

TESTER Tester knob indication: Voltage (—)

DATA Regulated voltage: 5.0 V at 5 000 r/min



GENERATOR COIL RESISTANCE

- Remove the fuel tank side cover. (☞ 7-5)
- Disconnect the generator coupler.

Measure the resistance between the three lead wires.

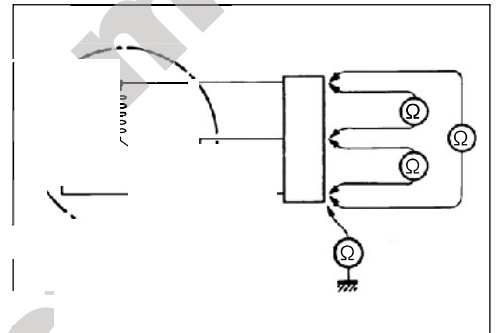
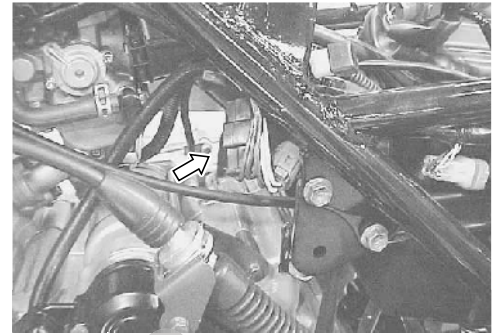
If the resistance is not specified value, replace the stator coil with a new one.

Also, check that the generator core is insulated.

TOOL 09900-25008: Multi circuit tester set

Tester knob indication: Resistance (Ω)

DATA Generator coil resistance: 0.1 – 1.5 Ω (Black – Black)
 $\infty \Omega$ (Black – Ground)

**GENERATOR NO-LOAD PERFORMANCE**

- Remove the fuel tank side cover. (☞ 7-5)
- Disconnect the generator lead
- Start the engine and run it at 5000 r/min

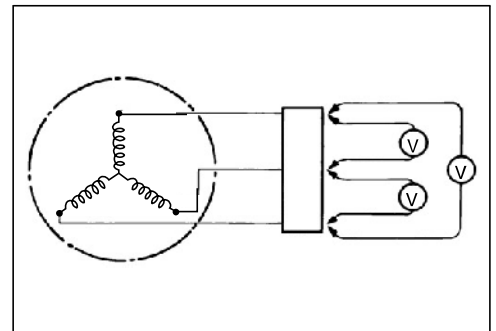
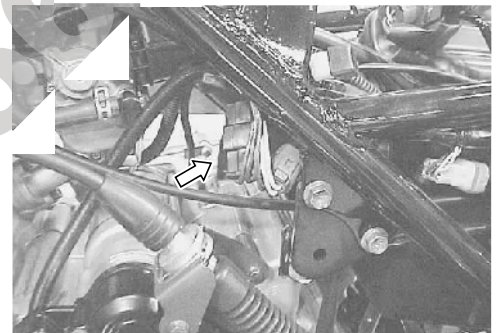
Measure the AC voltage between the three lead wires of the generator using the multi circuit tester.

If the voltage is under 10 V (AC), replace the generator with a new one.

TOOL 09900-25008: Multi circuit tester set

Tester knob indication: Voltage (V)

DATA Generator no-load performance: 10 V (AC) (when engine is cold):
 10 V (AC) at 5000 r/min



REGULATOR/RECTIFIER

- Remove the rear fender. (☞ 7-8)
- Remove the regulator/rectifier.

Measure the voltage between the terminals using the multi circuit tester, as indicated in the table below.

If the voltage is not within the specified value, replace the regulator/rectifier with a new one.

 **09900-25008: Multi circuit tester set**

 **Tester knob indication: Diode test (+↔-)**

Unit: V

		⊕ Tester probe					
⊖ Tester probe ①		(A)	(B)	(C)	(D)	(E)	(F)
	(A)		*	0.4—0.7	0.3—0.6	0.3—0.6	0.3—0.6
	(B)	*		*	*	*	*
	(C)	*	*		*	*	*
	(D)	*	*	0.3—0.6		*	
	(E)	*	*	0.3—0.6	*		
	(F)	*	*	0.3—0.6	*	*	

* More than 1.4 V (tester's battery voltage)

NOTE:

If the tester reads under 1.4 V when t
connected, replace the battery o

